

**002001s:** AladinLite

	x	y	S/N(1)	S/N(2)	r	dm	m_orig	Sat.
F002_001.fit:	2606.424	2303.144	11.32	10.99	inf.	inf.	11.9	No
F002_002.fit:	2607.513	2287.377	14.17	14.24	inf.	inf.	12.0	No
F002_003.fit:	2517.249	2179.436	11.84	11.07	inf.	inf.	12.1	No

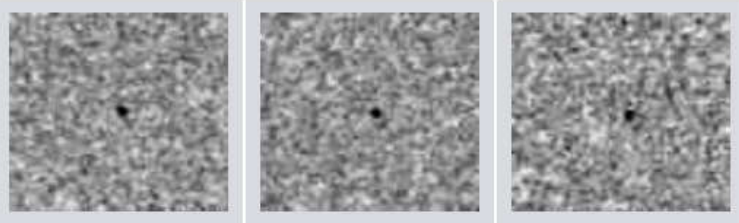

  

002001s	C2019	11	11.22631	05	14	53.66	-70	09	48.6	11.9	R	Y00
002001s	C2019	11	11.22725	05	14	53.59	-70	09	50.0	12.0	R	Y00
002001s	C2019	11	11.22815	05	14	53.82	-70	09	48.2	12.1	R	Y00

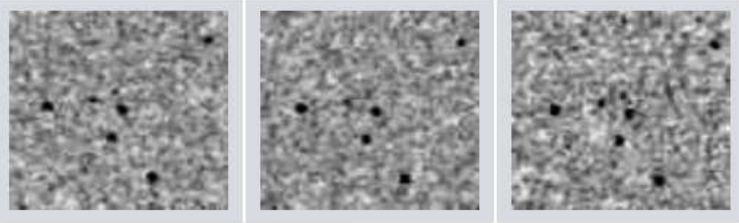
2 ID candidates found.

Designation	Packed/ID	Orbit/Type	Position Error		Magnitude	Displ.	Motion	Delta	r
			Dist.(")	PA(deg)		(pixels)	PA(deg)	(AU)	(AU)
0198-0083856		USNO B1.0 object	1.7	290	16.60 R, 17.02 B	0.00			
WISE J051504.6-700709	--	DCEP	168.6	019	13.222 (0.211) W1	0.00			

Original search images:



Source images of reference image #00000084:

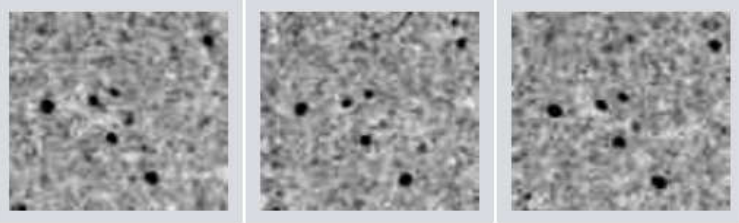
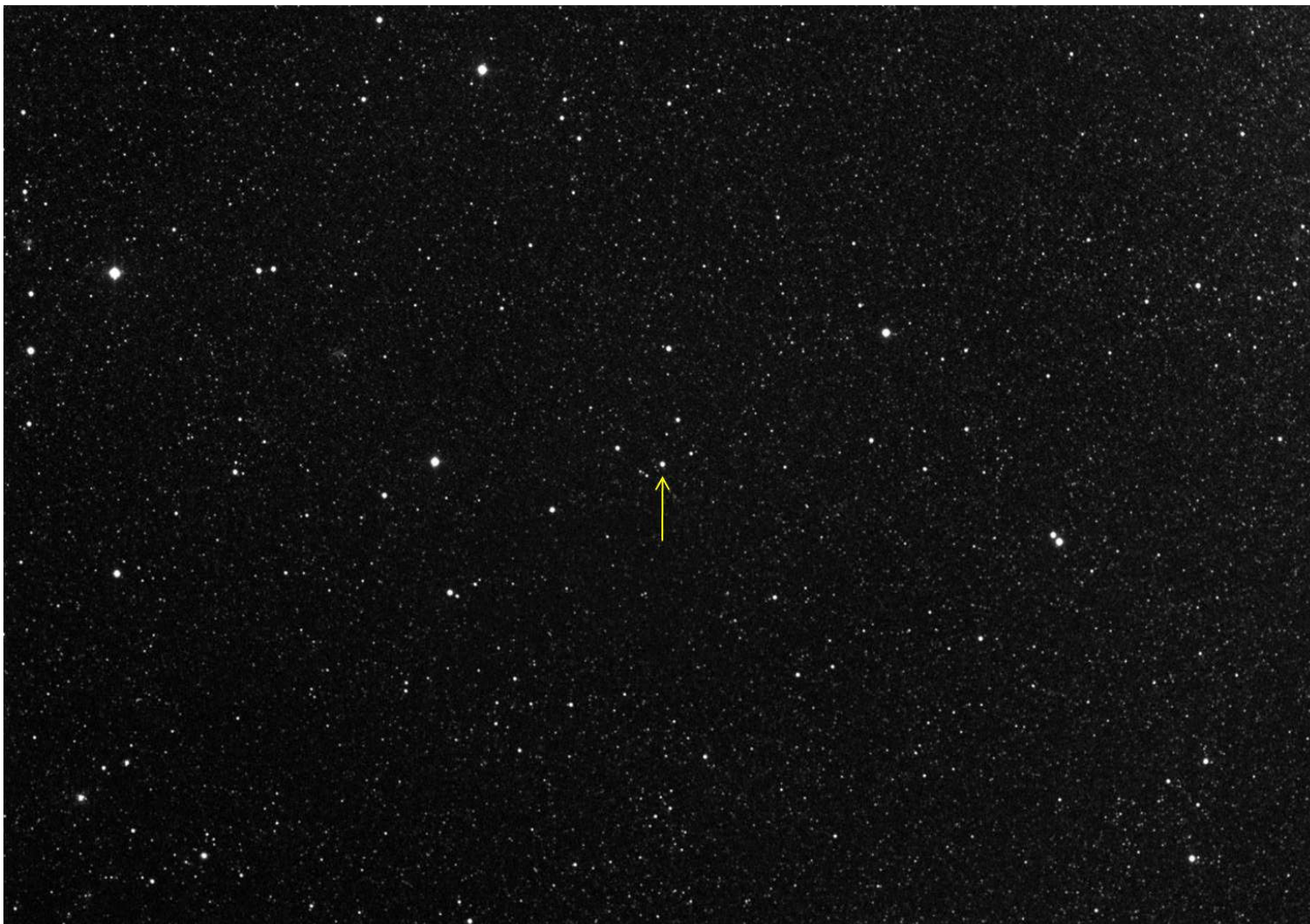
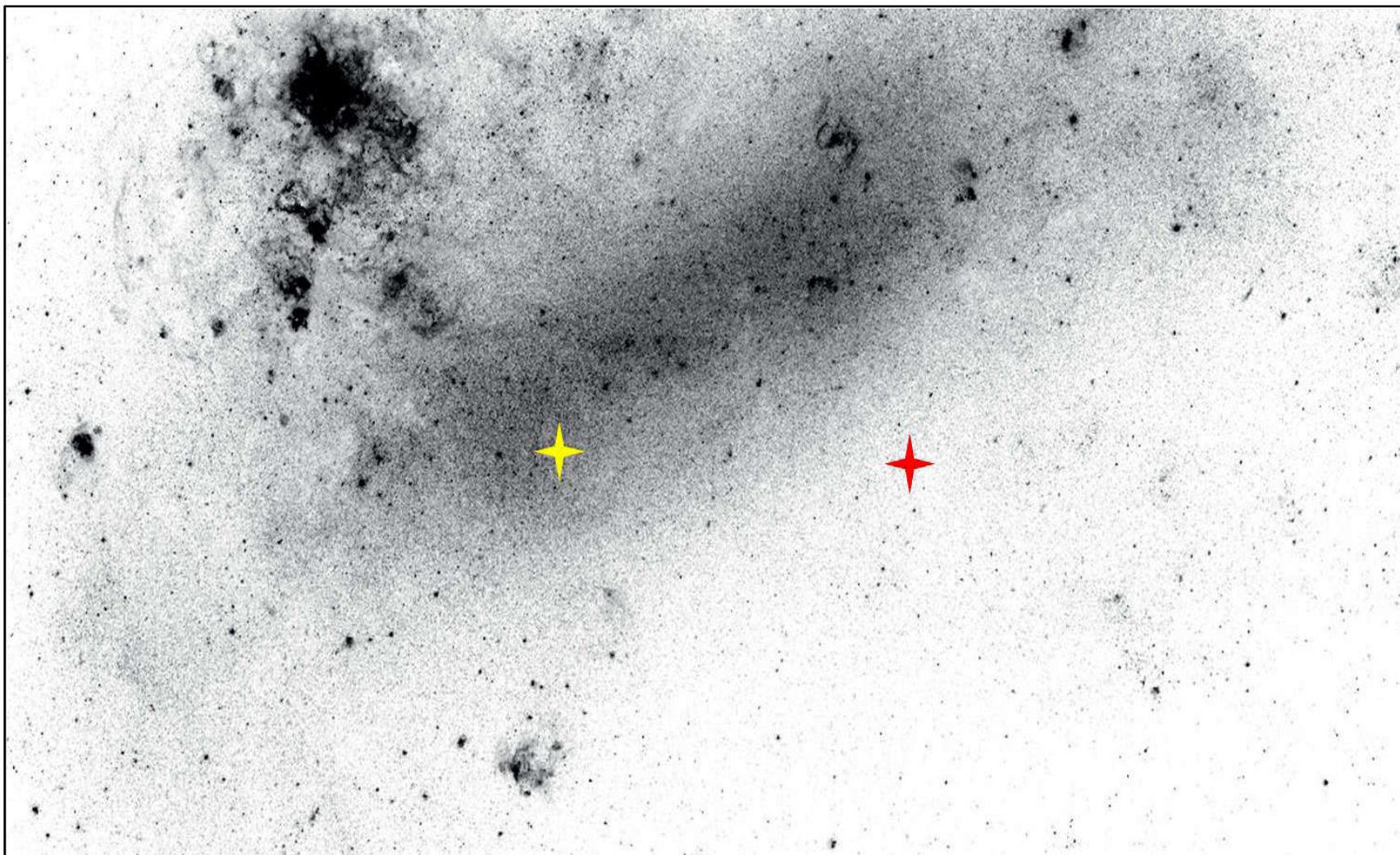


Figura 1: Imagens de descoberta da nova LMCN 2019-11a (software SkySift).



*Figura 2: Imagem de confirmação da nova LMCN 2019-11a (indicada pela seta).*



*Figura 3: Posições das novas LMCN 2019-07a (na barra central, em amarelo) e LMCN 2019-11a (à direita, em vermelho).*

HJD	UT_date	mag	
2458795.67927	2019-11-08.1792853	>16.399	
2458796.83898	2019-11-09.3390115	10.463	Máximo pelo ASAS
2458796.84022	2019-11-09.3402412	10.474	
2458796.84143	2019-11-09.3414606	10.463	
2458797.74140	2019-11-10.2414296	11.774	
2458797.74262	2019-11-10.2426476	11.750	
2458797.74383	2019-11-10.2438660	11.768	
2458798.71913	2019-11-11.2191689	12.316	
2458798.72035	2019-11-11.2203930	12.324	
2458798.72157	2019-11-11.2216085	12.310	
2458798.72627	2019-11-11.2263100	11.9	Data de nossa descoberta
2458799.75115	2019-11-12.2512111	12.688	
2458799.75243	2019-11-12.2524783	12.678	
2458799.75370	2019-11-12.2537476	12.693	
2458799.77571	2019-11-12.2757626	12.712	

*Tabela 1 – Evolução da magnitude da nova LMCN 2019-11a segundo dados do ASAS-SN Sky Patrol.*

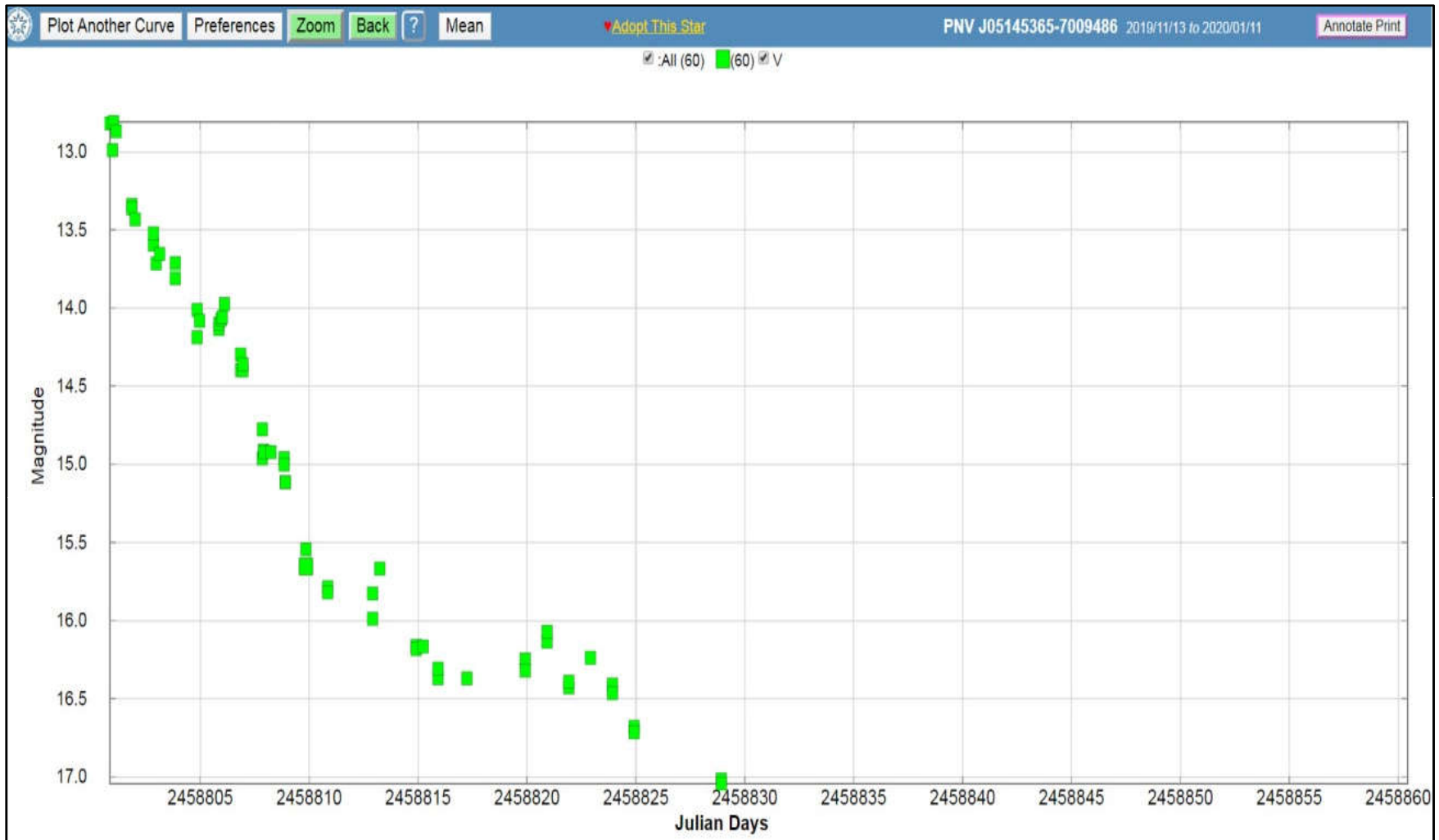


Figura 4: Curva de luz (V Johnson) para a nova LMCN 2019-11a até a magnitude limite 17.0.

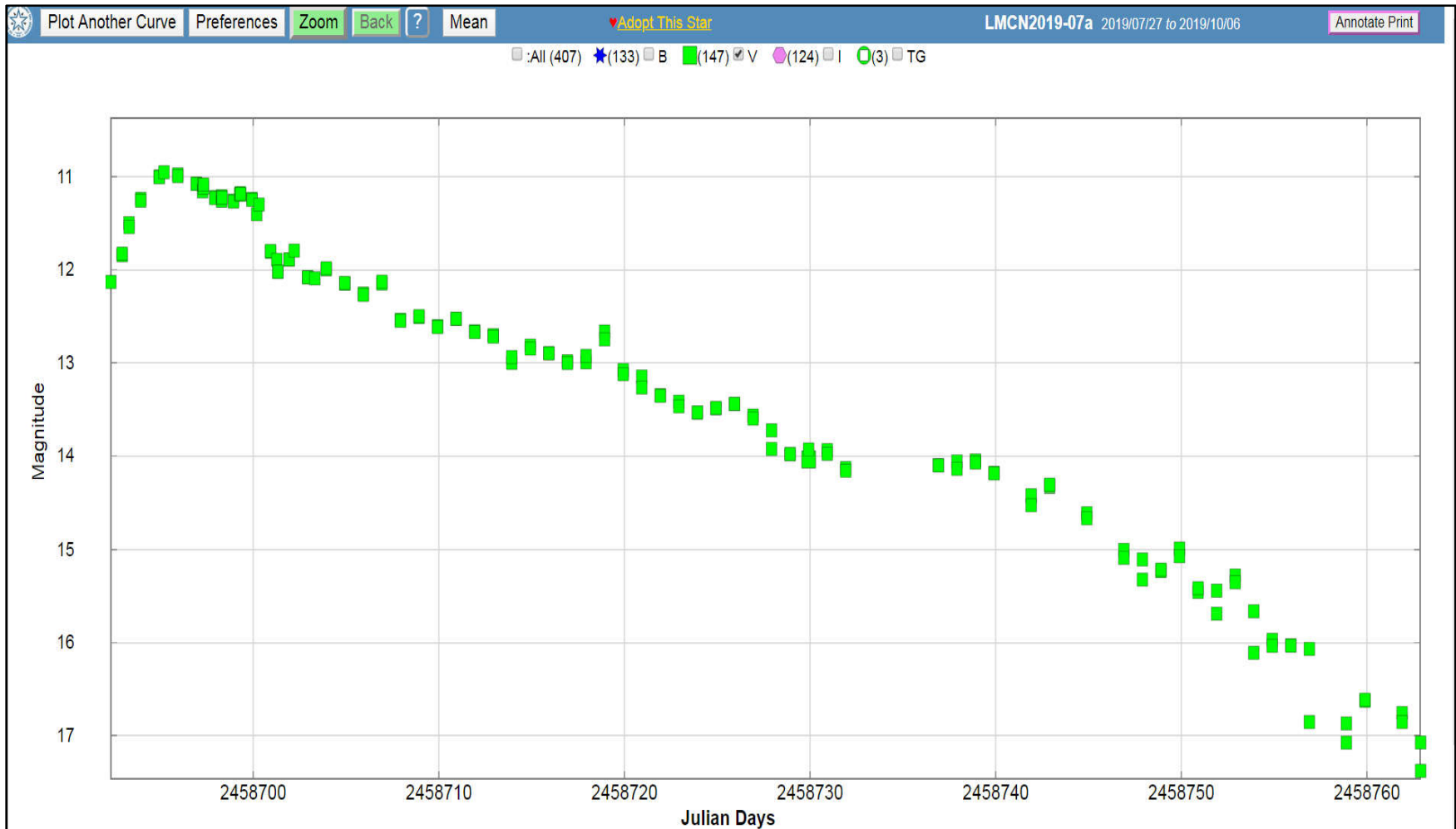
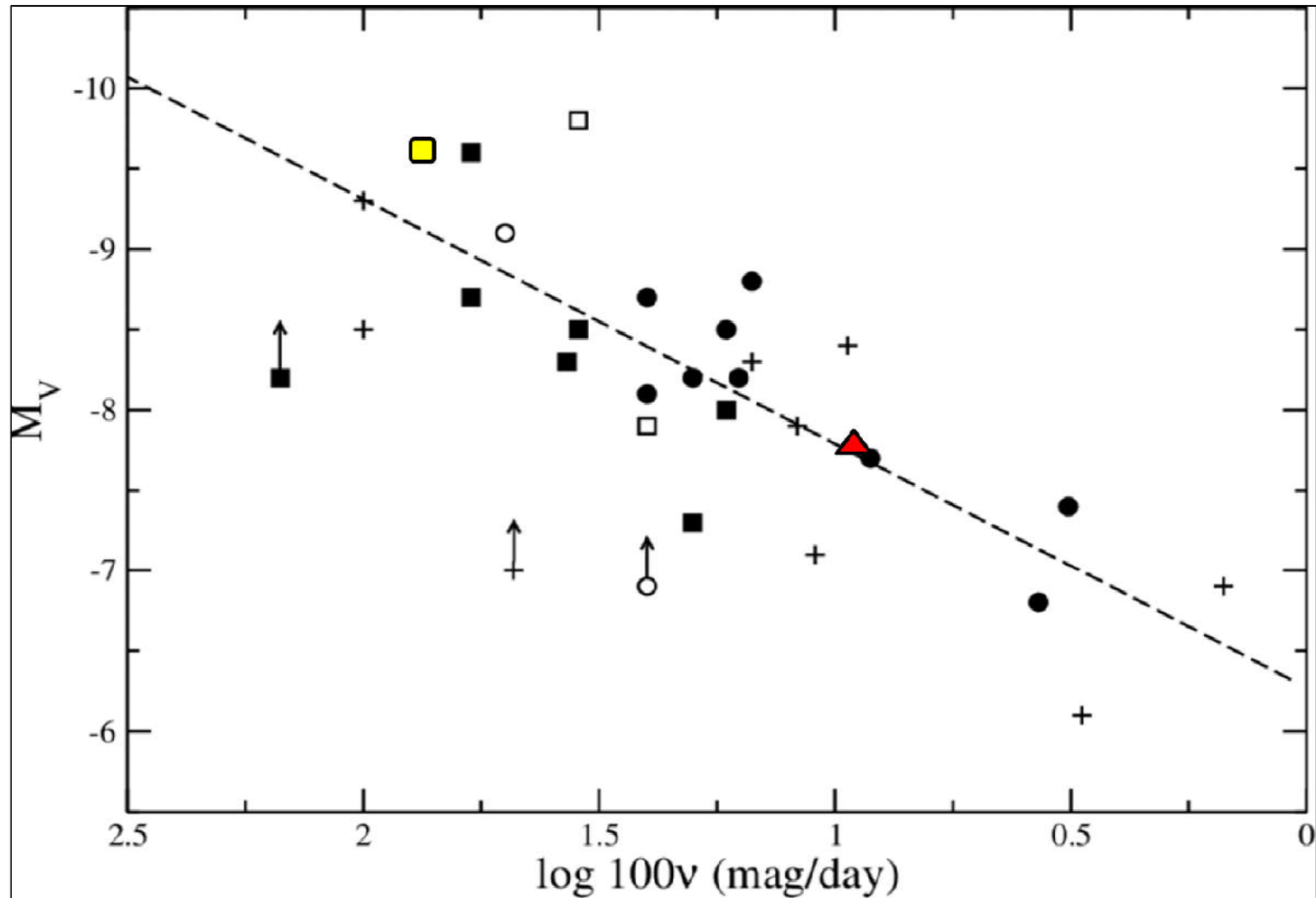


Figura 5: Curva de luz (V Johnson) para a nova LMCN 2019-07a até magnitude limite  $\sim 17.2$ .



*Figura 6 - Relação MMRD para uma amostra de 30 novas da GNM mostrando a posição relativa das novas LMCN 2019-07a (triângulo vermelho) e LMCN 2019-11a (quadrado amarelo).*